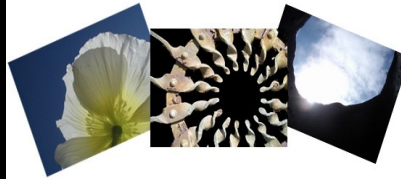


post-di-lu-vi-an (pōst ˈdi lōō ˈvē ən)

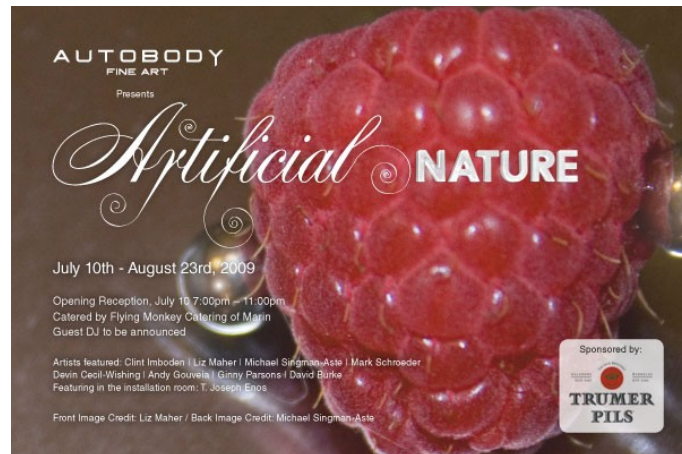
adj.

1. Existing or occurring after the Flood.
2. Modern; not antiquated.



1 October 2009

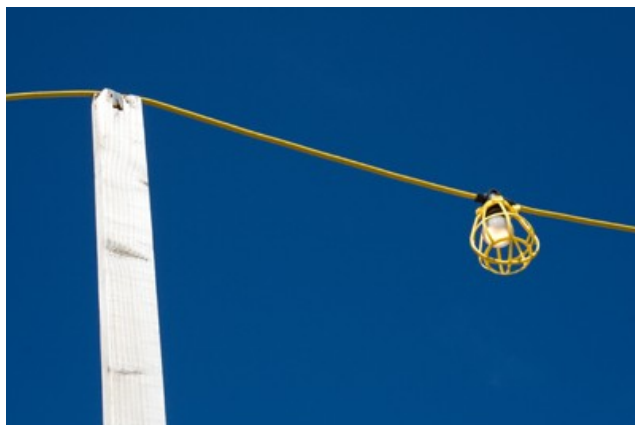
Happy Fall! I recently took part in my second group show at Alameda's [Autobody Fine Art](#). "Artificial Nature" ran from July 10-August 16. In addition to having several pieces in the show I had the honor of contributing the postcard image, seen here. It was a great show and, as always, Autobody threw us a great reception. (Thanks, Jacqueline and Colin.) Afterwards it continued, unofficially, at Forbidden Island Tiki Lounge, with good friends, old and new, in attendance.



I've got four photos in another group show opening October 2, at the [Frank Bette Center for the Arts](#) in Alameda. This exhibit, "Writer in Residence," explores themes of the written word, home, and infrastructure. While the exhibit runs through Halloween, you really should be there opening night: The Tiki Lounge is walking distance from the Frank Bette.

I've continued volunteering at the Frank Bette, staffing the gallery. Additionally, I've recently begun curating satellite exhibits for them. The first of these, at [Gallagher & Lindsey Realtors](#) in Alameda, is an eclectic mix of painting, photography, book making, and sculpture. G&L has just become a member of the [Estuary Art Attack](#), and the reception for this exhibit will take place at G&L during the next EAA, Friday, October 9, from 6-9 PM. I hope you'll stop by, have a snack, and buy some art. I'll get this out of the way: Yes, I work on commission. But as the curator I only include work I really like. Sweet!

That same night my friend Erica Agyeman is also curating a show, "Caught in the Spotlight," at another EAA site, Chuck DiGuida's Bridgehead Studios. After you visit Gallagher & Lindsey I hope you'll swing by Bridgehead. There's always amazing art at that place, and you can't beat the company.



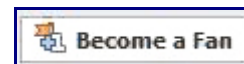
I also hung eight of my own photographs in another Frank Bette satellite exhibit, at [EyeWise Optometry](#) in Alameda. It's a very cool space with friendly people. They are kind enough to be planning a reception for me. Details to follow.

Finally for nontraditional venues, I'm taking part in a group show hosted by Autobody Fine Art at the [Alameda Marketplace](#). I hear the food there is orgasmic. (Or was that organic?) My photos are directly across from Feel Good Bakery.

So, have you started your holiday shopping? Me neither. But since I don't plan on writing another newsletter until after the holidays.... I've got more than three dozen of my photos on [Shutterfly](#). You can order prints in 8x10, 11x14, or 16x20, as well as mugs, stationary, decks of cards, etc. It's your one-stop holiday shop.



Please forward this newsletter to anyone you think may be interested, and they can [subscribe](#) themselves. If you'd like to catch up on previous newsletters, there's an archive on the News page of [my website](#). Thank you again for your support.



Warm Regards,

Michael Singman-Aste
<http://www.postdiluvianphoto.com/>